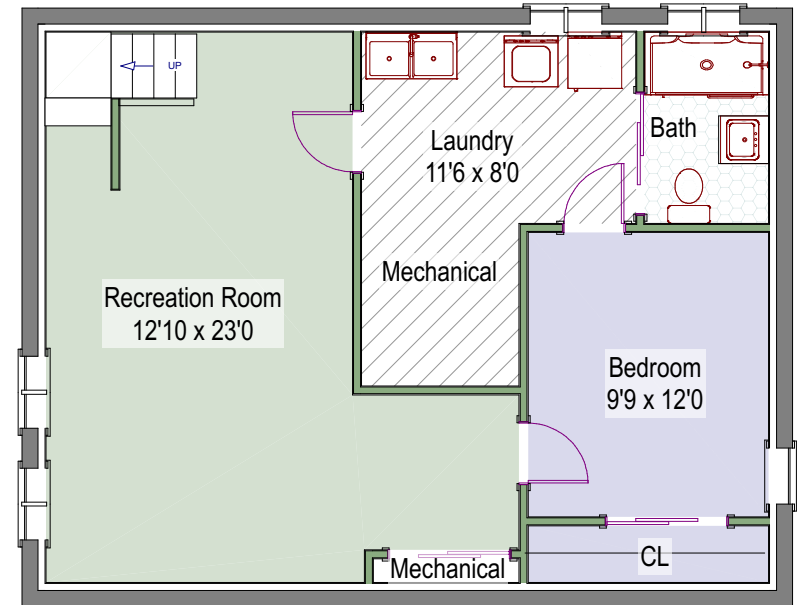
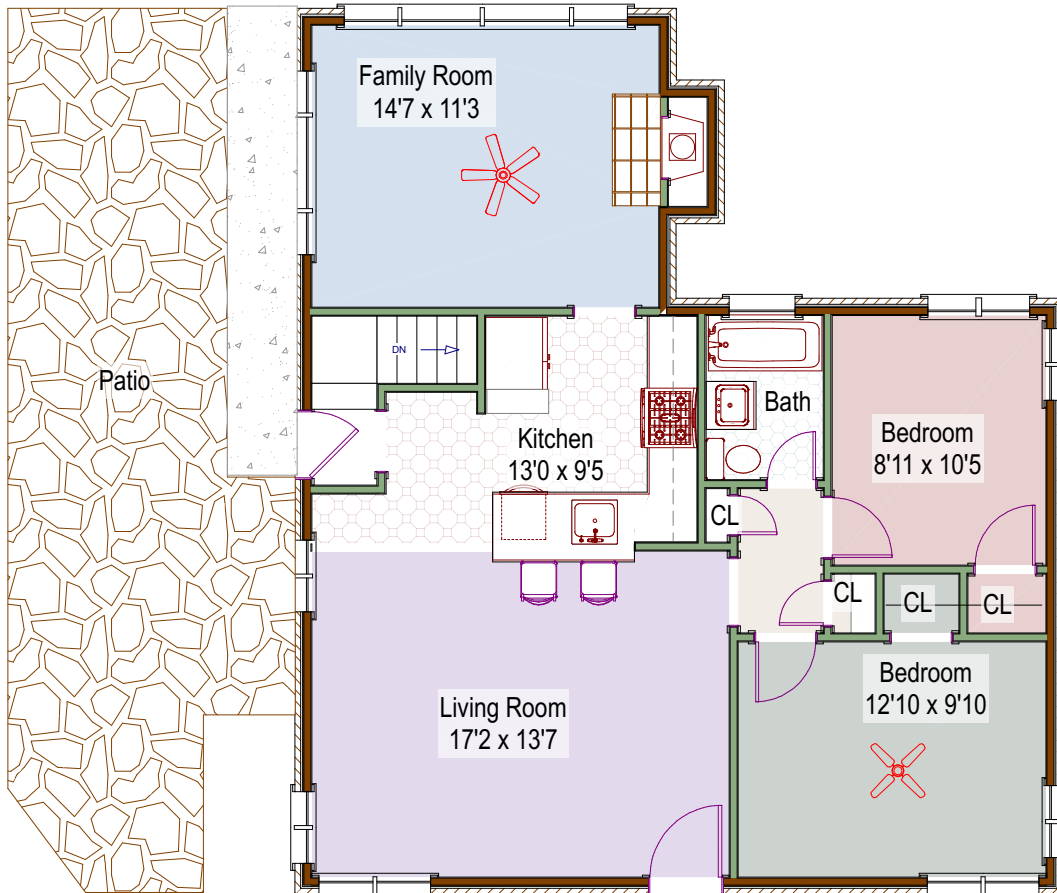


963 Poplar Street  
Denver, Colorado

Lower Level - 804 square feet +/-  
644 finished square feet +/-  
161 unfinished square feet +/-

Main Level - 1009 square feet +/-



Property includes a detached shed - 8'2 x 10'2

Firuzeh Saidi  
(303)523-9289 mobile  
firuzeh.saidi@compass.com  
www://ForSaleBoulder.com



COMPASS

