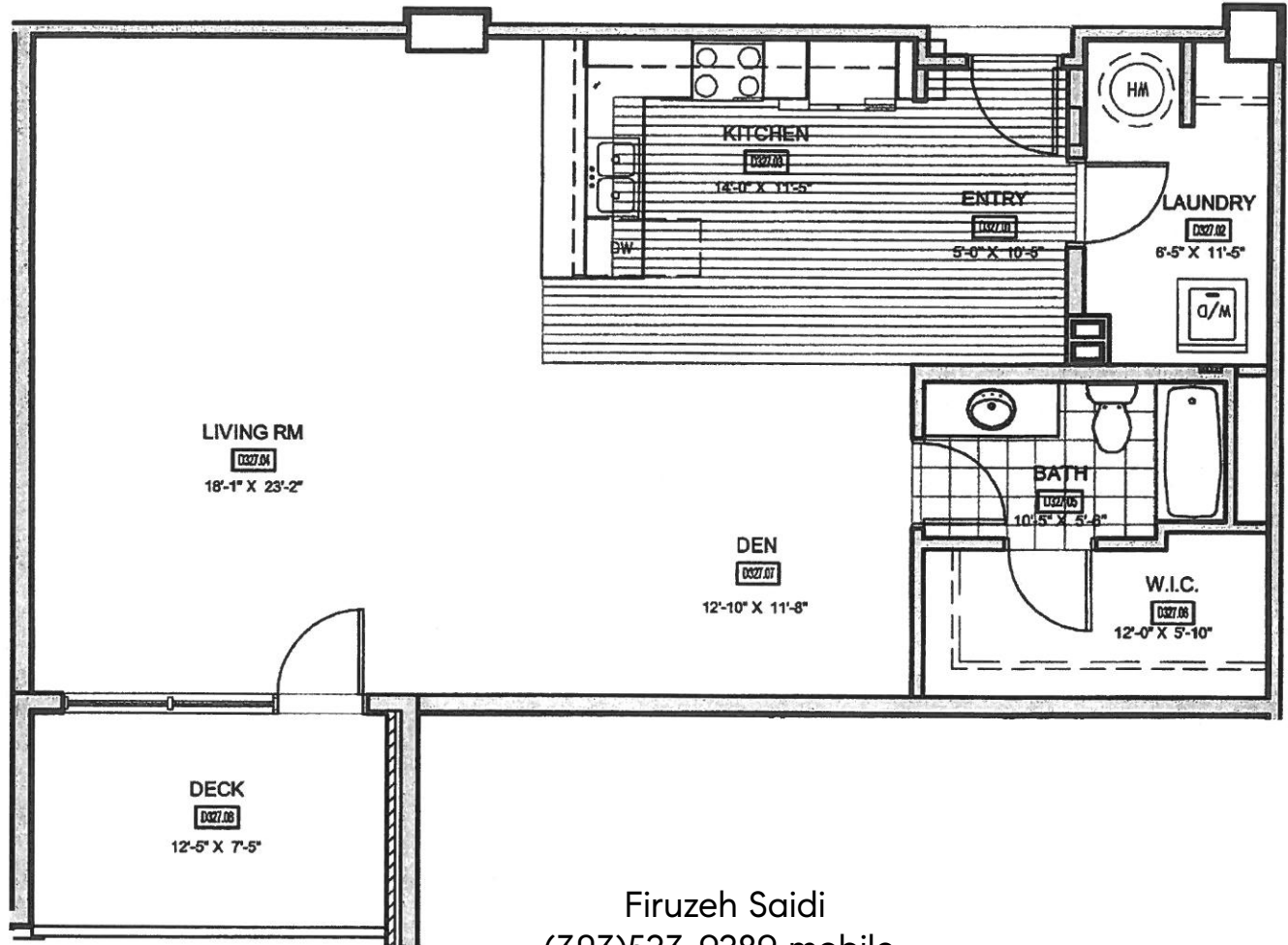


3601 ARAPAHOE AVENUE, UNIT D327 BOULDER, CO 80303

MAIN LEVEL - 1047 SQ FT



Firuzeh Saidi
(303)523-9289 mobile
firuzeh.saidi@compass.com
www://ForSaleBoulder.com



COMPASS



FLOOR PLANS ARE BASED ON THE CURRENT DEVELOPMENT PLANS AND ARE SUBJECT TO CHANGE WITHOUT NOTICE. SQUARE FOOTAGE AND DIMENSIONS ARE APPROXIMATE. APPLIANCES ARE SHOWN TO DEMONSTRATE LOCATION ONLY.

DATE: 24 APR 07

UNIT #
D327

NOT TO SCALE